

Population

Data Layers

Evaluation

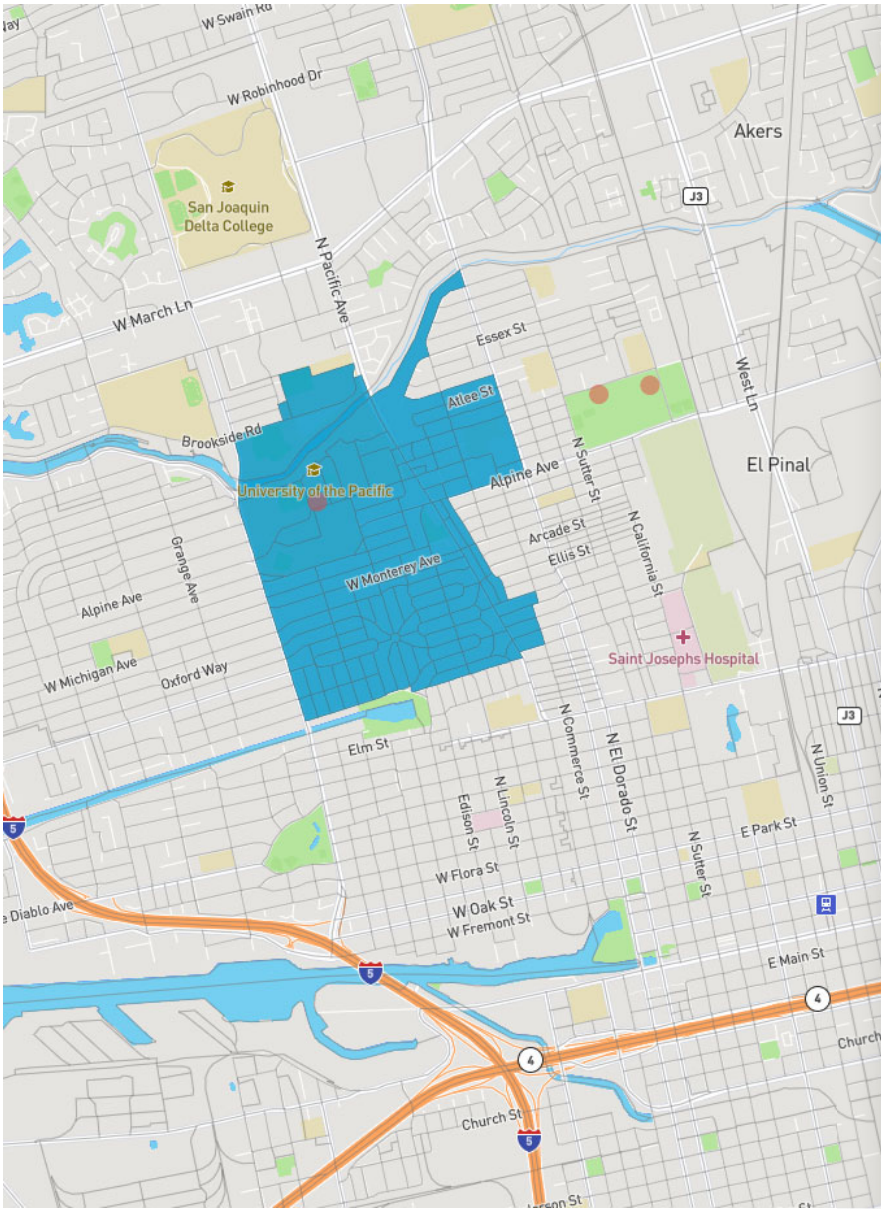
▼ Population Balance

① Uses 2020 Decennial Census population with processing by Redistricting Partners on 2020 Blocks.

	155,468
	155,219
	156,092
	156,049
	156,405
	Ideal: 155,846.6

UNASSIGNED POPULATION:0

MAX. POPULATION DEVIATION:0.4%



Drawing Data Layers Evaluation

▼ Areas of Interest

SELECT

University District

NAME

University District

Centric to the University community.

These details are updated automatically

▼ Important Places



SELECT

University of the Pacific

PLACE NAME

University of the Pacific

Established in 1851, the University of the Pacific was California's first chartered institution of higher learning. Founded by pioneering Methodist ministers, it remains the only Methodist-affiliated university in California.
1955—The School of Pharmacy

Communities of Interest

University District

Centric to the University community.

Important Places

University of the Pacific

Established in 1851, the University of the Pacific was California's first chartered institution of higher learning. Founded by pioneering Methodist ministers, it remains the only Methodist-affiliated university in California.

1955—The School of Pharmacy opened

1956—The Graduate School was created

1957—The School of Engineering was established

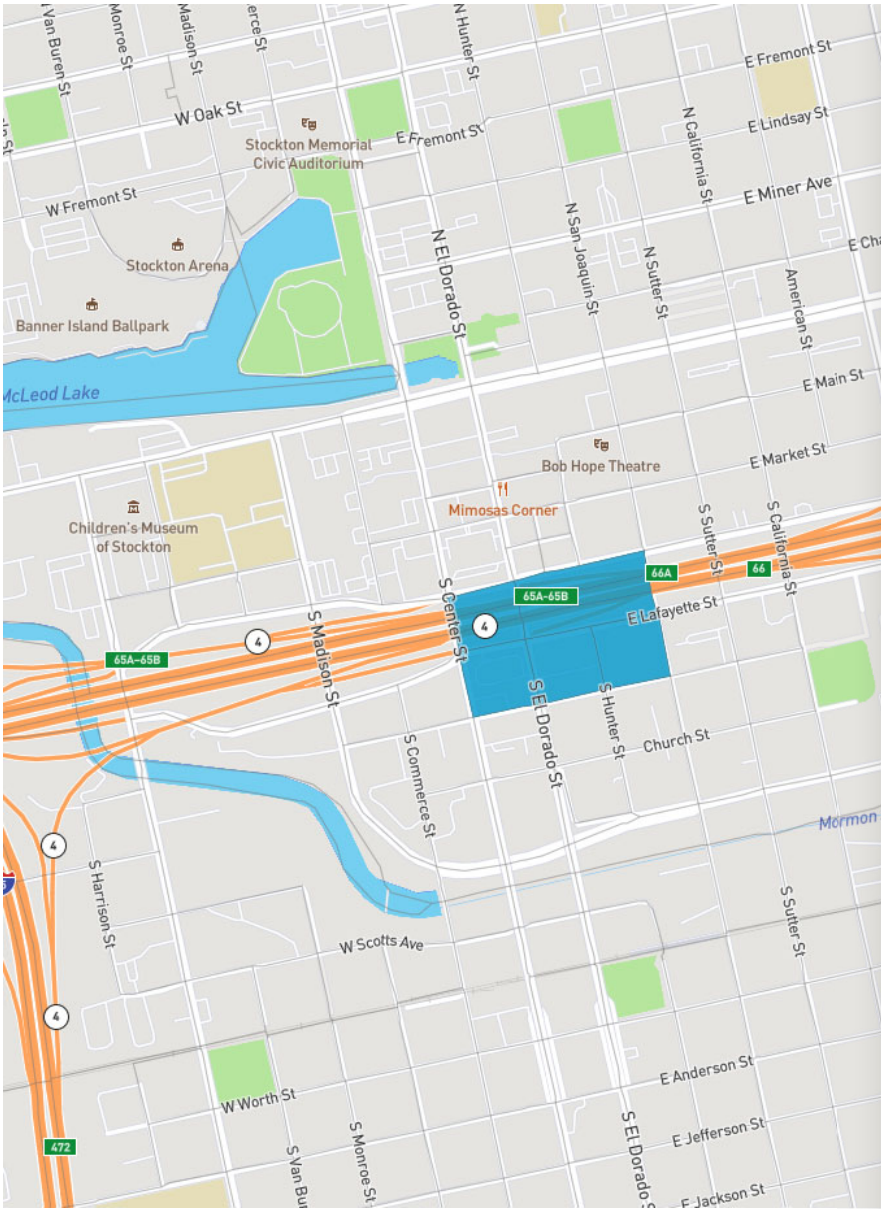
Sustainability is having healthy social, environmental, and economic systems that allow us to meet our needs without compromising the ability of future generations to meet their own needs. The University of the Pacific is committed to a campus culture that advances this approach for a sustainable future among all members of the Pacific community.

Iconic Billy Hebert Field

Iconic Billy Hebert Field is a stadium in Stockton, California. It is used primarily for baseball and was the home field of the Stockton Ports. The City of Stockton commissioned JD and Danielle Hardcastle to restore the historical Billy Hebert Complex and provide an affordable, quality venue for the youth of the community. Billy Hebert Stadium field, Dodie Healy Field and Kay Coe Field have all been upgraded with new infield artificial turf, along with the installation of cameras for live game streaming for fans to watch the games from home. One of the most impressive renovations is the addition of the new batting cages, which includes live video replay, and Hitrax, the first and only baseball simulator. Furthermore, a new fully equipped weight room has been added to the complex. Billy Hebert Stadium, the two auxiliary fields and batting cages are all available for rent.

Oak Park Ice Arena

Oak Park Ice Rink has been around since 1970. Oak Park Ice Rink is part of only a handful of public ice skating rinks in California.





Drawing

Data Layers

Evaluation

▼ Areas of Interest

SELECT



Little Manila



NAME

Little Manila

Just for the record - granted there's not much left after State Route 4, and not very populated present-day, so probably little overall effect on redistricting, but it's still a historic site of widely recognized cultural significance.

These details are updated automatically

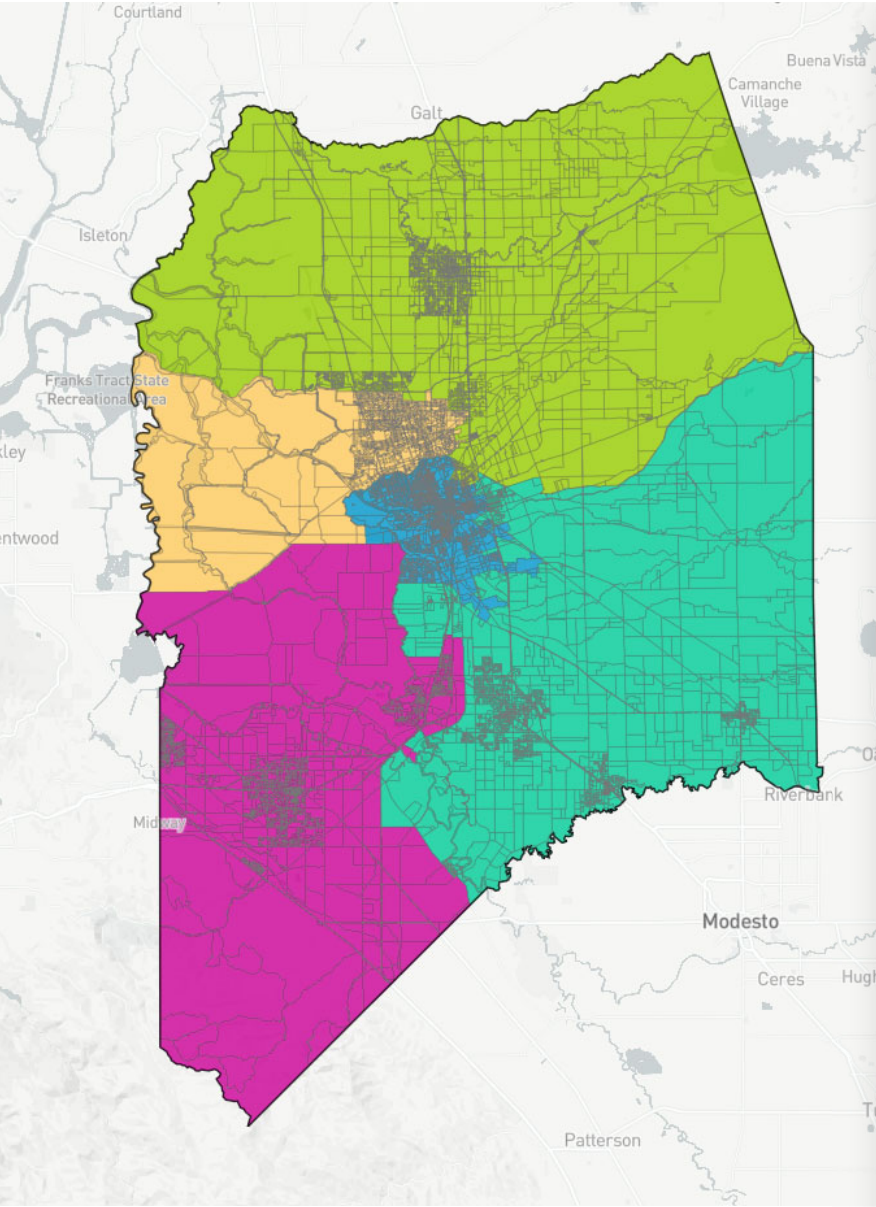
▼ Important Places

 New

Communities of Interest

Little Manila

Just for the record - granted there's not much left after State Route 4, and not very populated present-day, so probably little overall effect on redistricting, but it's still a historic site of widely recognized cultural significance.



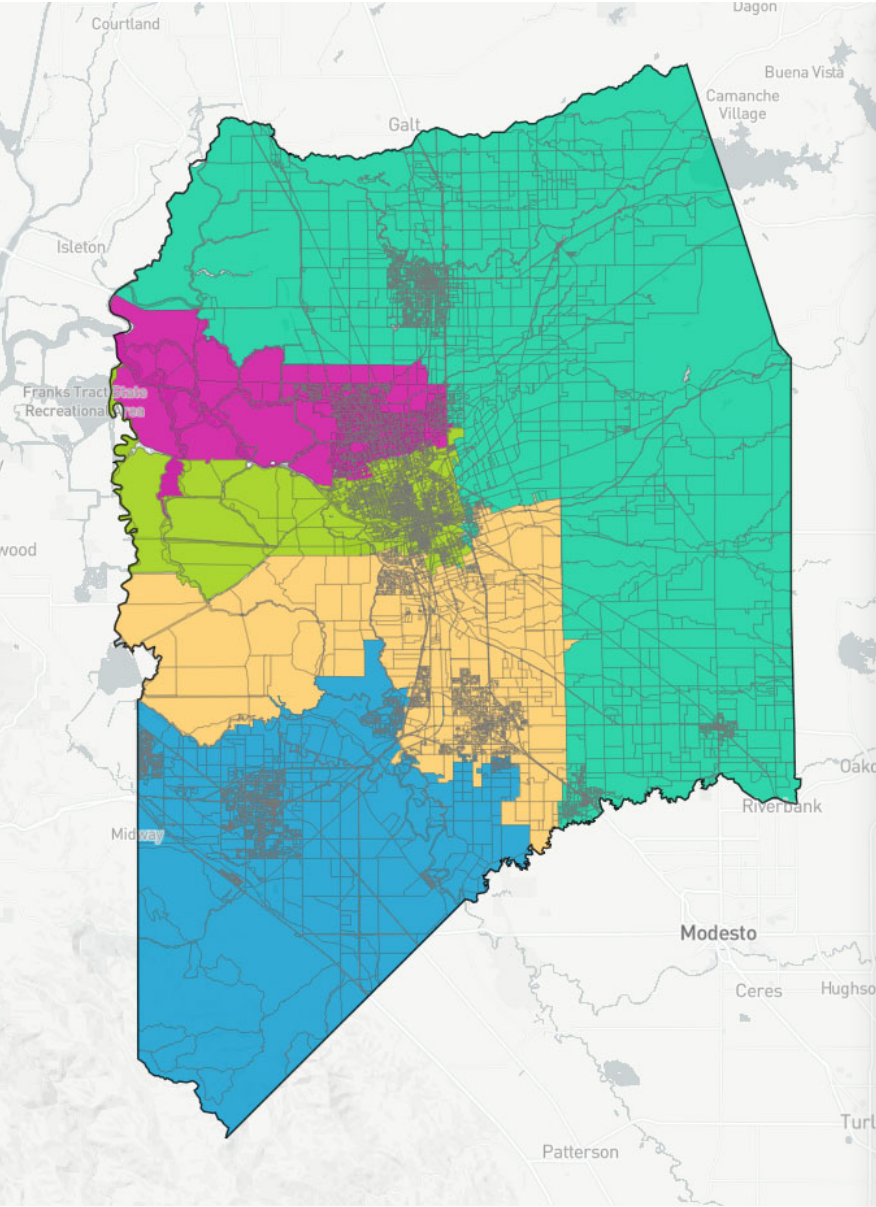
Population Data Layers Evaluation

▼ Population Balance

① Uses 2020 Decennial Census population with processing by Redistricting Partners on 2020 Blocks.

	155,949
	155,807
	155,825
	155,808
	155,844
	Ideal: 155,846.6

UNASSIGNED POPULATION: 0
MAX. POPULATION DEVIATION: 0.07%



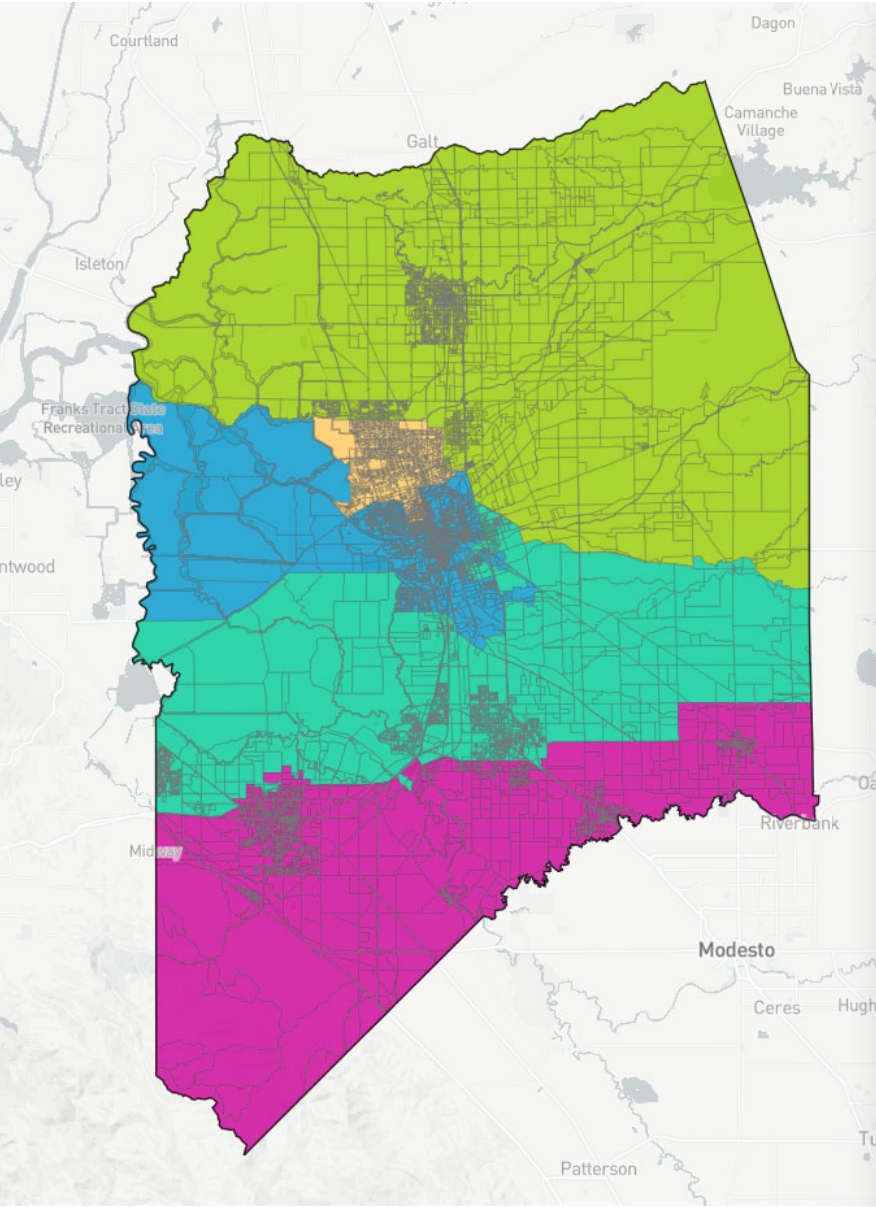
Population Data Layers Evaluation

Population Balance

① Uses 2020 Decennial Census population with processing by Redistricting Partners on 2020 Blocks.

	154,627
	153,066
	153,920
	157,513
	154,525
Ideal: 155,846.6	

UNASSIGNED POPULATION: 5,582
MAX. POPULATION DEVIATION: 1.78%



Population

Data Layers

Evaluation

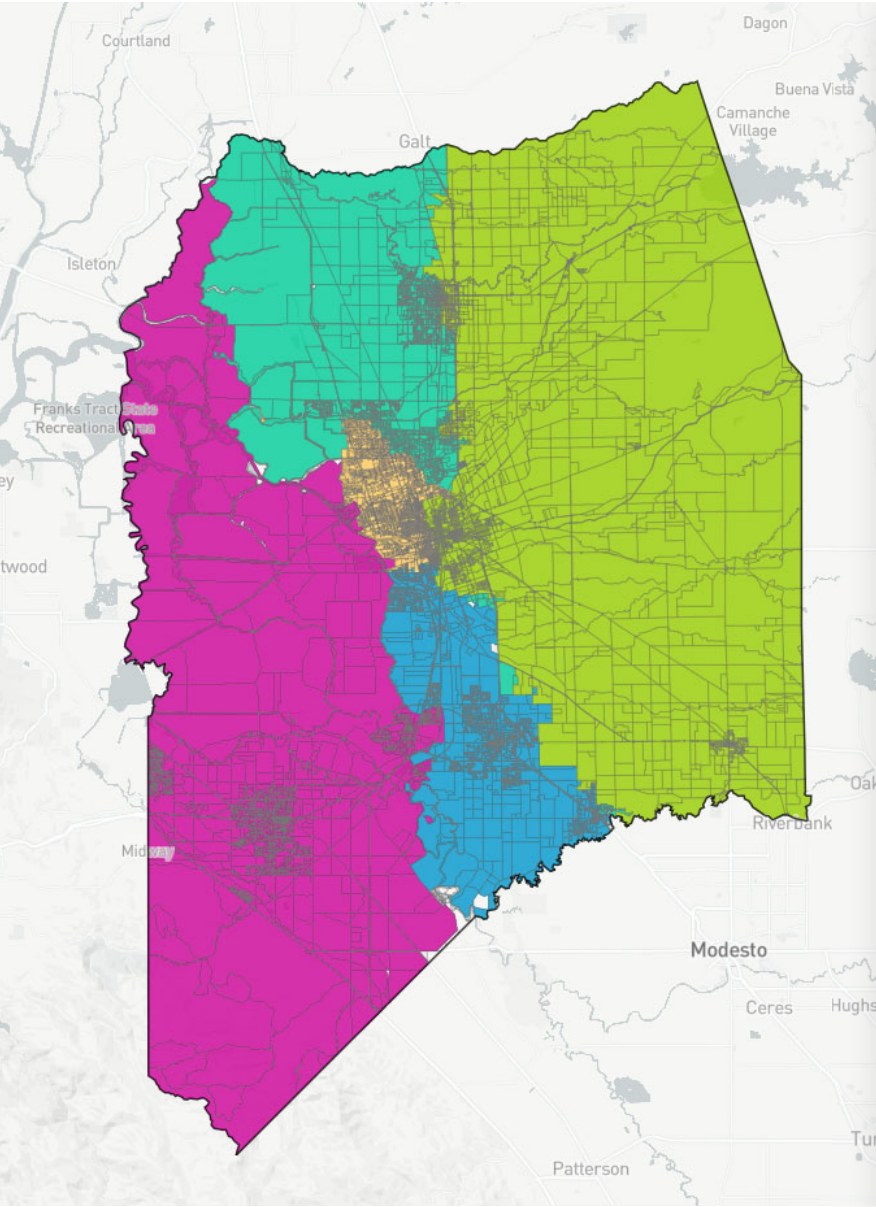
▼ Population Balance

① Uses 2020 Decennial Census population with processing by Redistricting Partners on 2020 Blocks.

	155,743
	155,656
	155,897
	156,015
	155,922
	Ideal: 155,846.6

UNASSIGNED POPULATION:0

MAX. POPULATION DEVIATION:0.12%



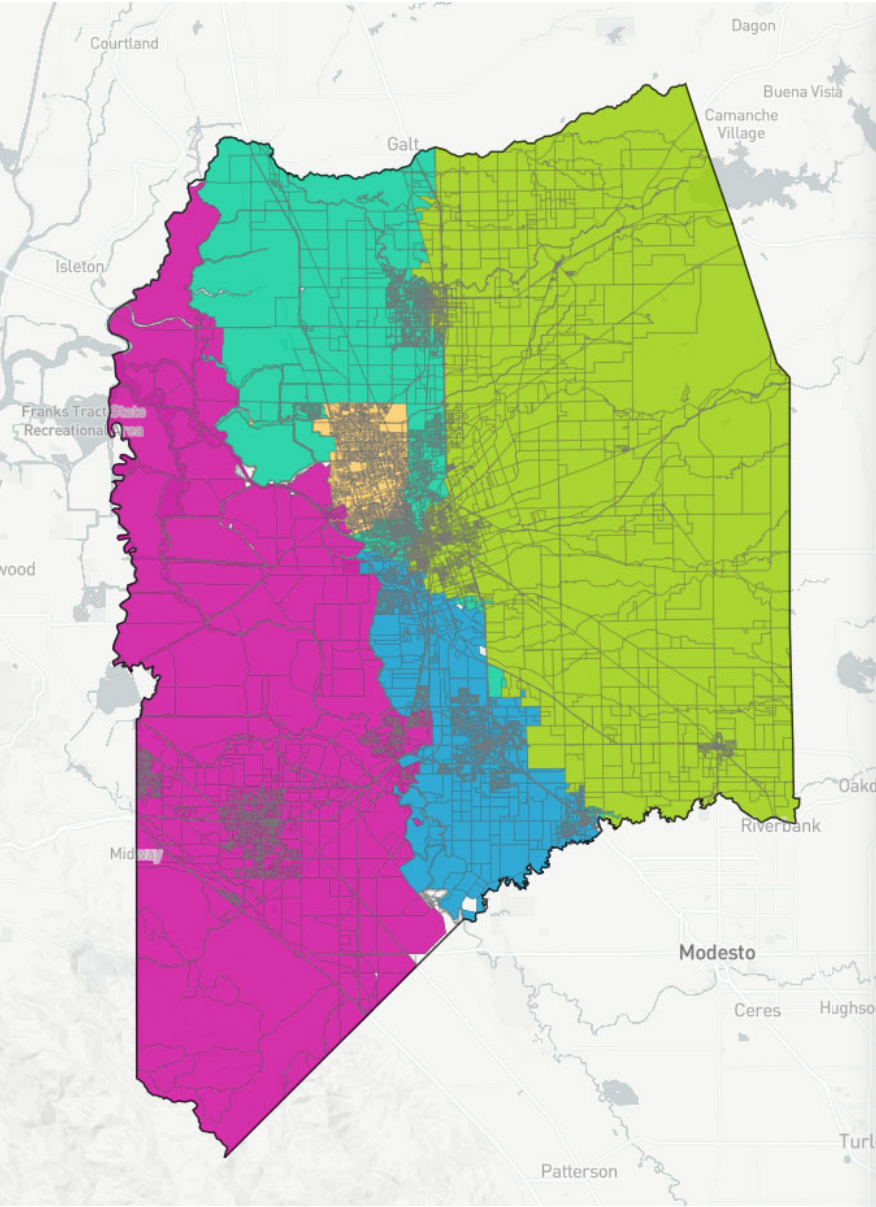
Population Data Layers Evaluation

Population Balance

① Uses 2020 Decennial Census population with processing by Redistricting Partners on 2020 Blocks.

	155,989
	155,585
	155,123
	154,976
	155,513
Ideal: 155,846.6	

UNASSIGNED POPULATION: 2,047
MAX. POPULATION DEVIATION: 0.56%



Population Data Layers Evaluation

▼ Population Balance

① Uses 2020 Decennial Census population with processing by Redistricting Partners on 2020 Blocks.

	155,388
	156,441
	155,035
	155,177
	155,145
	Ideal: 155,846.6

UNASSIGNED POPULATION: 2,047
MAX. POPULATION DEVIATION: 0.52%



Evaluation

① Uses **2020 Decennial Census** population with processing by Redistricting Partners on **2020 Blocks**.

